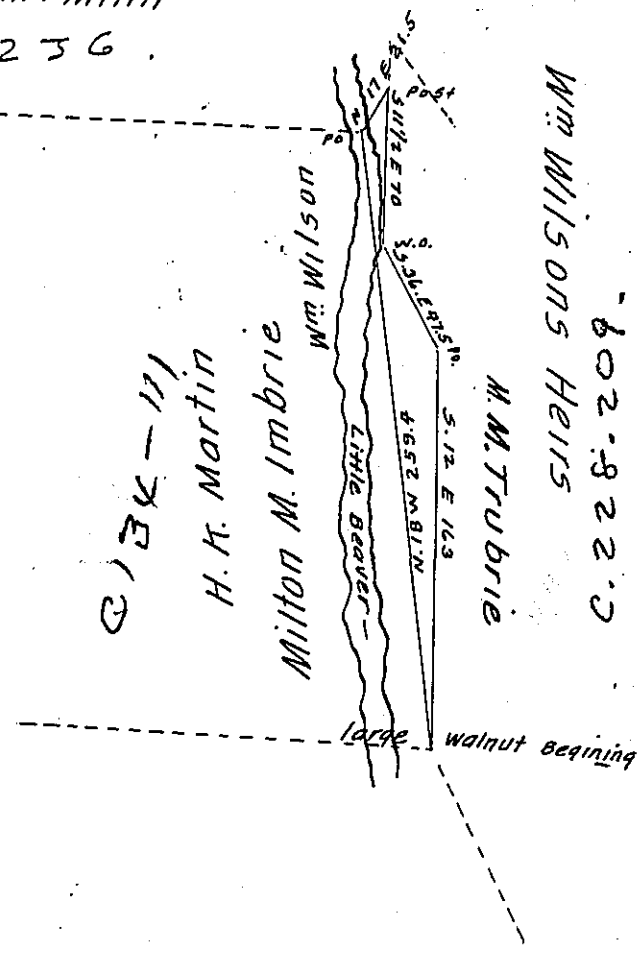




Robt Mc Minn  
C. 137. 256.



The above Plot represents A Survey made in pursuance of a Warrant  
 of Pa granted by the Commonwealth, to Henry Mc Elheny dated December  
 the 4<sup>th</sup> A. D. 1855 Containing thirteen Acres and thirty perches of  
 Land and allowance of Six per c. Situate in Big Beaver Township  
 Beaver County Pennsylvania Surveyed Dec. 21<sup>th</sup> A. D. 1855 by

Chainers } J. T. Boyd  
 Robert Irwin

Hugh Cunning Co. Sr.

IN TESTIMONY that the above is a copy of the original remaining on file in  
 the Department of Internal Affairs of Pennsylvania, made  
 conformably to an Act of Assembly approved the 16th day of  
 February 1833, I have hereunto set my hand and caused  
 the Seal of said Department to be affixed at Harrisburg,  
 this twenty sixth day of August 1907.

*Henry Howard*  
 Secretary of Internal Affairs.